

# EVIDENCE OF IMPACT- 2017 KS2 DATA



Smith's Wood Primary Academy

## Overview

KS2 Attainment 2017 · Actual results

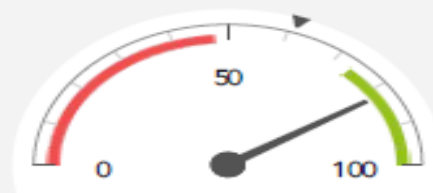
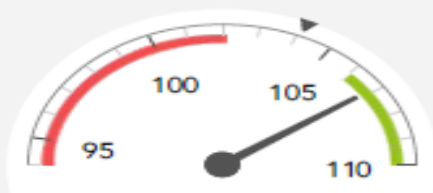
56 pupils

Average Scaled Score (Re, Ma)

% Expected standard+ (Re, Wr, Ma)

106.9 +

82% +



Significantly above the national average (104.1) ◀

Significantly above the national average (61%) ◀

# ATTAINMENT SIGNIFICANTLY ABOVE AVERAGE

KS2 Progress 2017 · Value Added

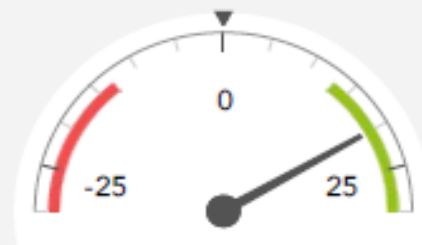
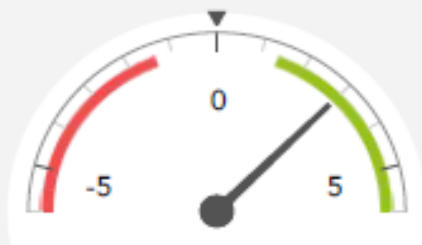
56 matched pupils

Average Scaled Score (Re, Ma)

% Expected standard+ (Re, Wr, Ma)

+3.0 +

+20% +



Significantly above the national average (0) ◀

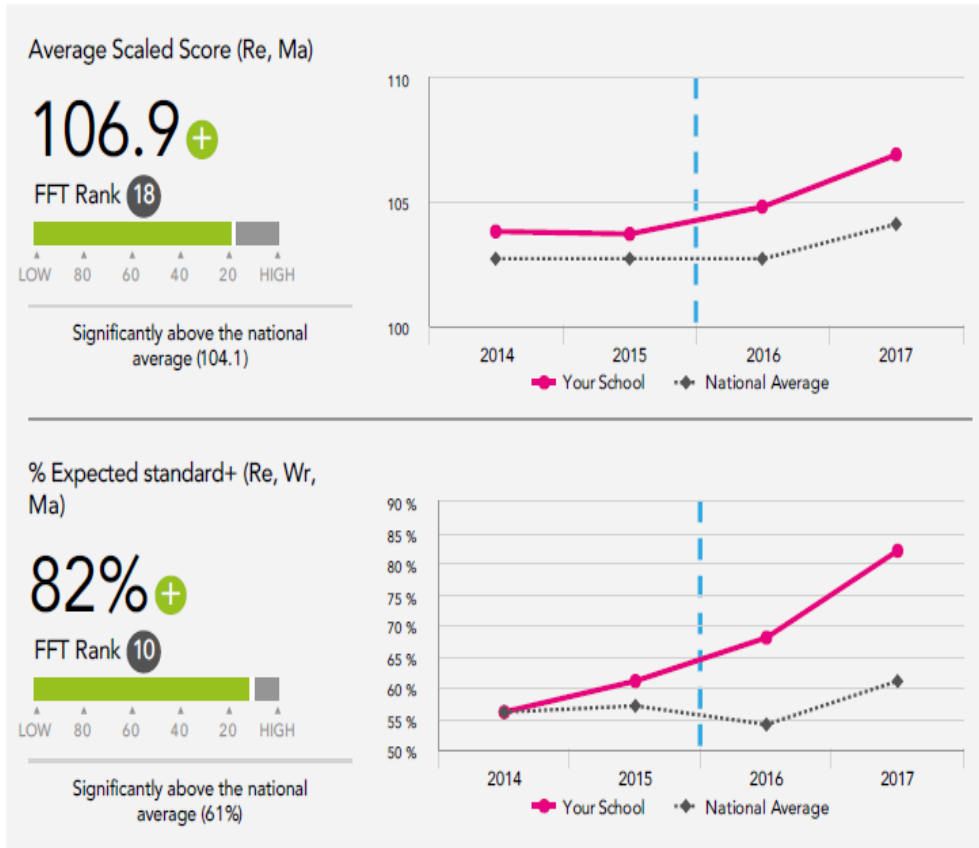
Significantly above the national average (0%) ◀

# PROGRESS SIGNIFICANTLY ABOVE AVERAGE

# Attainment & progress

## KS2 Attainment 2017

56 pupils



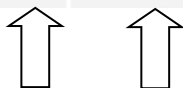
## KS2 Progress 2017

56 matched pupils



## KS2 Pupil groups performance 2017

	Pupils	Actual results			Pupil progress		
		Average Scaled Score (Re, Ma)	% Expected standard+ (Re, Wr, Ma)	% Higher standard (Re, Wr, Ma)	Average Scaled Score (Re, Ma)	% Expected standard+ (Re, Wr, Ma)	% Higher standard (Re, Wr, Ma)
<b>Pupil Premium</b> (FSM in last 6 years)	33	106.0+	76%+	9%	+2.9	+18%	+2%



**PUPIL PREMIUM PUPILS RECORDED AS "SIGNIFICANTLY ABOVE"**

# Average progress for disadvantaged pupils in reading, writing and maths

	Reading	Writing	Maths
Progress score for disadvantaged pupils Confidence interval ?	<b>+2.07</b> -0.05 to +4.19	<b>+1.73</b> -0.33 to +3.79	<b>+3.61</b> +1.69 to +5.53
National average for non-disadvantaged pupils	+0.33	+0.17	+0.28
Number of disadvantaged pupils	33	33	33

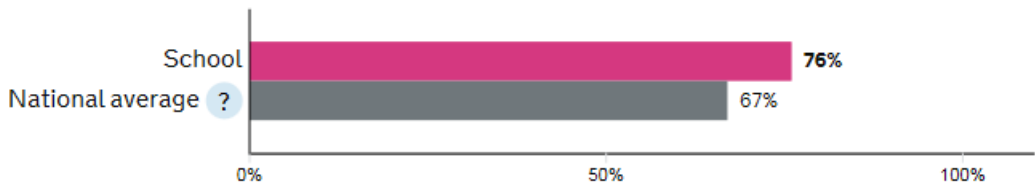


The progress of Smith's Wood disadvantaged pupils is greater than the progress of non disadvantaged pupils nationally. By quite a lot.

## Reading, writing and maths combined

### Percentage of disadvantaged pupils achieving the expected standard

Number of disadvantaged pupils = 33



The percentage of disadvantaged pupils achieving the expected standard is above national average.

# MORE THAN A SCHOOL