



Reception Handbook

2020-2021



MORE THAN A SCHOOL



**TOP 100
EMPLOYER
— 2015 —**

Brought to you by
National
Apprenticeship
Service



Welcome

It is with great pleasure that we welcome you to Smith's Wood Primary Academy.

We believe the years at primary school are some of the most important and formative for a child. They should be happy, exciting and fulfilling. Together, we aim to provide an environment in which all children will develop independent, caring and confident personalities, aware of their own abilities and talents. We will provide an education of the highest quality, by providing children with inspirational and memorable learning experiences.

As parents and carers, you are a vital part of that, and we hope that you too, will enjoy and benefit from your years as a member of our school community.

We hope you find this pack helpful and informative, within this pack you will find key forms that will need to be returned to the school office by July 15th 2020. We will also need to see a copy of your child's birth certificate (for those that have attended our Nursery, you do not need to provide this again). Unfortunately, failure to return these forms by July 15th will mean that your child cannot start with us in September, until they have been returned.

Also, included in this pack will be guidance about applying for Free School Meals, these are applicable to parents in receipt of specific benefits. We would encourage you to apply, even though all children will receive a school meal through the Universal School Meal scheme, as it means we can receive additional funding for your child in school.

As a school, we place high value on educational trips and over the course of the year, your child can look forward to various trips. As well as developing your child's academic ability, we also place high importance of developing their sense of self and character. Our core school values are now embedded into all that we do at Smith's Wood Academy so that we can nurture pupils to be prepared and ready to flourish in tomorrow's society.

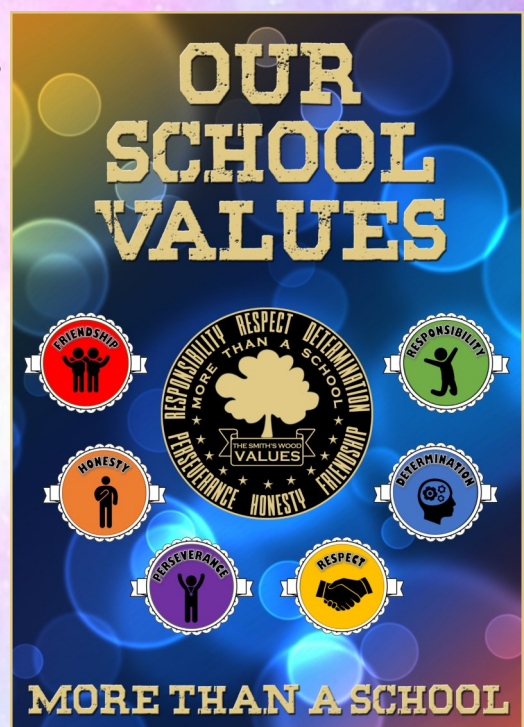
In order to support your child to transition into Reception, we offer settling in sessions, where your child will be able to meet their class teacher and some of the children in their class in smaller groups. Due to the current climate, we are at this point in time, unable to communicate what these will look like just yet. However, I can confirm that transition will start on the first day of term for pupils (September 2nd 2020). I will write to you again, with further details, once we are able to plan what the settling in sessions will look like. Please also check our school website (<https://www.smithswoodpri.solihull.sch.uk/> under the 'parents' tab) to see a video of our Reception area and/or join our private facebook group (Smith's Wood Primary Academy) for further updates and information.

If you do have any further questions, please do not hesitate to contact myself.

We look forward to working with you.

Miss Amy Price

EYFS Lead



Curriculum

Your child will be working within the Early Years Foundation Stage. The curriculum is broken into two key areas :

Prime areas

- ◇ Communications and language
- ◇ Physical development
- ◇ Personal, social and emotional development

Specific areas of learning

- ◇ Literacy
- ◇ Mathematics
- ◇ Understanding the World
- ◇ Expressive art and design



Underpinning the EYFS curriculum is the principle that each child is unique and has the opportunity to interact in positive relationships and enabling environments. This also contributes to the Characteristics of Effective learning, where we will develop these fundamental principles:

Playing and Exploring

Children learn through being inquisitive and willing 'to have a go', they will play with what they know as well as exploring and finding out new ways to learn. They are encouraged to work with others as well as independently.

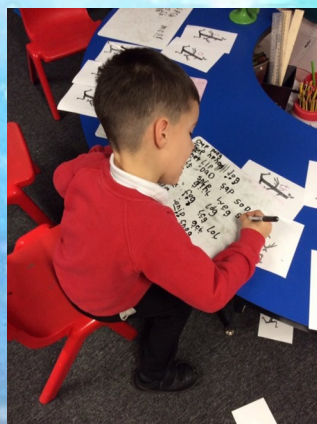
Active Learning

Children develop resilience to keep on trying and to enjoy achieving what they have set out to do. They will be involved in their learning and develop their concentration to achieve.

Creating and Thinking Critically

Children are encouraged to develop their own ideas and to choose ways to do things, as well as making links between their ideas and observations. This will in turn build their self esteem and confidence.

We plan activities to meet the needs of the children based around half-termly themes that take into account their interests. They will learn through a mixture of adult led learning focuses as well as through child initiated play that is carefully planned to meet all areas of the EYFS curriculum. They will also take part in daily phonics lessons in order to develop their early reading skills.



The school day

Beginning of Day— 8:45am

Your child will enter their classroom via the Key Stage 1 playground. The door will be opened at the beginning of each session by a member of staff. We ask that you wait just outside the wooden fence of the Reception outdoor area and then the children will enter the classroom by themselves in order to promote their independence.



During the Day

All children learn in a free flow environment where they access the outside area throughout the day. Please ensure that your child attends school with suitable clothing (hat, gloves, waterproof coat, sun hat etc) to suit the weather so that they are prepared for outside learning.



Children will be given milk and a piece of fruit to have as a healthy snack each day. Water will also be available throughout the day and we ask that all children attend school with their own named water bottle; this can also be refilled throughout the day, if needed.

As part of '**Universal Infant Free School Meals**', all children in Reception are entitled to a free school dinner. Hot dinner menus will be sent home each half term so that you can discuss with your child what they might want to choose. A member of staff will discuss the choices available with your child each morning. Choices will include hot and cold options, as well as a vegetarian option. Alternatively, you can provide your child with a packed lunch, however we ask that it does not include fizzy drinks or nuts. We encourage children to make healthy food choices, and ask that your child's lunchbox supports a healthy eating ethos. Your child will be encouraged to eat what they have brought with them and where possible any food that is not eaten will be left in their lunch box so you can see what has not been eaten. *Please remember to name your child's lunch box clearly.*



Children will also take part in weekly PE lessons and they will need to have a named PE kit in school each week. This will be sent home at the end of the week to be washed and will need to be returned for the start of the following week. Please see additional information for uniform expectations, including PE kit.

End of the Day—3:10pm

At the end of the day we will open the door and ask you to wait just outside the Reception area, so that we can release the children safely one by one. We will not be able to send your child home with anyone we do not know, or have not been told about previously (*please be aware that anyone collecting your child must be aged 16 or over*). Please be patient at this time as we learn to match adults to children. It is important we release the children safely.

Please note, that drop off and pick up access, as well as the location may be slightly different to the above, due to the current situation. If this is to be different for September, I will communicate this to you in advance of September.

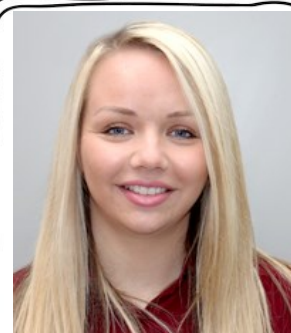
Meet the adults your child will get to know in school



Miss Givens—Principal



Miss Price—EYFS Lead



Miss Biddle—Class Teacher



Miss Parker—Class Teacher



Miss Tranter—Class Teacher

At Smith's Wood Primary Academy we believe that the Reception year is one of the most important years in a child's development and for fostering a life long love of learning. Therefore, we are committed to ensuring your child reaches their potential in smaller class sizes of no more than 20 children in their Reception year. As well as your child's class teacher, there will be additional adults that work alongside your child and if your child needs additional support, we will work with you to plan and provide interventions to support them. Within this pack, there is additional information about our inclusion team, should you have any concerns regarding your child.

Education is a partnership between children, parents and staff. The Reception team are always available to talk to parents after school for a quick informal chat if information needs to be shared. However, we ask that you do not ask to speak to your child's class teacher at the start of the day, unless you need to share important information about your child, as the teachers will need to be in the classroom settling the children to start the day promptly. Alternatively you can email or ring the school office (office@smithswoodpri.solihull.sch.uk / 0121 779 8050) and the information will be passed to your child's class teacher. We ask that you let us know when something important or exciting is happening in your child's life so that we can celebrate it and discuss it in school.

In the unfortunate event you have a concern or a complaint, please make an appointment to speak to the EYFS Lead (Miss Price) in line with our complaint policy.

We really appreciate how important parental involvement is in a child's educational journey and over the year we will invite you to take part in workshops and watch your child in assemblies.

Key Information

Reception Fund

Each week we ask parents to contribute 50p to the Reception Fund. This enables us to provide a broader curriculum and supplement the financial support we receive from the Government. We would be extremely grateful if you could please let us have your contribution every Monday; it would be appreciated if you could please send it in an envelope, with your child's name written on it. Alternatively you may prefer to contribute half termly. We hope that everyone will support the Reception Fund but no child will be excluded from any activity because of a parent's inability to pay. *All money received directly benefits your child.*

These contributions will support:

- Food tasting
- Cookery ingredients
- Extra resources, such as books, equipment and craft materials
- Playdough ingredients
- Outdoor equipment
- Malleable resources



Absence

Please let us know if your child is ill, or unable to attend school by phoning the school office in the morning. Failure to inform the school, will result in a phone call and/or home visit.

Medicine

Please make sure that staff are aware of any medical problems/ allergies. We administer medicine when a consent form has been signed by parent/ carer. In sunny weather we ask that you apply sun cream before they come to school.

Trips

We hope to take your child out on trips linked to their learning. Some of these trips will be in the local area– we will ask you to sign a permission slip each time, to allow us to take your children out.

Photographs

Photographs/ video images of the children boost self– esteem and are a really good way to show what we have been learning. We will ask for your consent to display them on the school website and our private Facebook page.

Safety

Jewellery can be dangerous and should not be worn. If your child has pierced ears then studs only are acceptable. Long hair should be tied back please.

Please also name all your child's clothing and footwear.

Whilst we will do our best to take care of your child's belongings, staff cannot be responsible for any lost items. Children often have the same brands of clothing and without them being named it can be very confusing what belongs to which child.

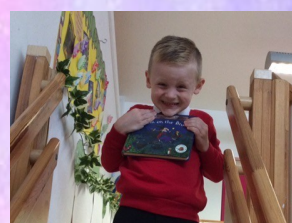
Home Learning

Your child will take home a book from our reading scheme. We ask that you read with your child every night and encourage them to read it back to you. Please bring books and book bags to school every day. We will read with your child at least twice a week and will change books when staff think the children are ready. The children will have a home school diary. Please write in it to let us know how your child has got on. Your child will therefore need a book bag. These can be purchased from the office.

There are two ways we assess a child's reading ability. We look at how well they can blend and decode words and their developing fluency, as well as checking they understand the text they have read and can discuss key information. We ask that you not only listen to your child to read, but to also ask questions to check their understanding. Children will also visit the school library weekly and bring home a book to share. We thank you in advance for your support in helping your child to learn to read.



**The more that you read,
the more things you will know.
The more that you learn,
the more places you'll go.**
-- Dr. Seuss



Preparing your child for school

Before your child starts school, it would be beneficial that they have learnt some key skills that will enable them to become confident and independent learners.



Be able to get dressed, put shoes and socks on and do up coat.



Encourage their social skills by being able to share and take turns. To be confident to ask for help when needed and be able to listen and respond to others.



Be able to go to the toilet independently and wash hands correctly.



MORE THAN A SCHOOL

A WARM WELCOME TO SMITH'S WOOD PRIMARY ACADEMY

On behalf of Smith's Wood Primary Academy, I would like to welcome you to our school- we are very much looking forward to welcoming your child to our Reception in September.

Our school is a large, 2 form entry school, which was graded Outstanding in 2017. We take a lot of pride in our school, setting high standards in everything we deliver.

Teaching and Learning at Smith's Wood Primary Academy is outstanding; we have a team of extremely dedicated staff, who will work with your child to ensure they make rapid progress and achieve high standards in their learning. Whether it be work, uniform, or behaviour, the standards at Smith's Wood are outstanding and we ask that all parents share this belief in high standards with us.

Smith's Wood Primary Academy has achieved standards in excess of the National expectation for many years and academic achievement has a high level of importance at this school. We will work tirelessly with your child to ensure that they reach their academic potential. Coupled with academic standards, we also ensure that pupils at Smith's Wood primary have opportunities which set us apart from other schools. The motto 'More than a School' is one which we believe in and we will ensure that your child is consistently offered opportunities which reflect this motto.

Regular attendance is extremely important and we make no apologies for the high expectations we place on pupils attending regularly. We will guarantee parents, that if they commit to their child attending regularly, then their child will make rapid progress in this school. National attendance is 96% and this is the standard which we strive to exceed every year. For your child to achieve 96% attendance, or above, then they must have no more than 7 days off per year.

Behaviour expectations in our school are high and this applies to all pupils. There are clear routines, rewards and consequences and all pupils are expected to work within these boundaries. For any pupils, who may experience some challenging behaviour, there are support mechanisms in place and our extensive inclusion team will offer support where required, however all pupils are still expected to follow the school rules.

We also ask that parents are respectful of the school and other adults on the school site. If there are any concerns, or issues, there are clear procedures for dealing with these. A senior member of staff is available on the playground each morning for any questions, or queries. Whilst we understand that social media is a popular way of communicating, we would request that parents discuss any issues they have with the school and avoid sharing their concerns on a social media platform.

If any parent or carer has any questions about the school, at any point, then please feel free to ring or email the school office and a senior member of staff will be more than happy to discuss any questions you may have.

We look forward to welcoming your child to our school in September.

Miss Danielle Givens

Principal



SCHOOL UNIFORM

Smith's Wood Primary Academy is a "uniform" school and we expect that all children, from Nursery to Year 6, wear uniform in school.

Uniform ensures that all of the children are dressed smartly and sets a good standard for the pupil and the school. We also believe that uniform wears well, costs less than fashion wear and contributes to a feeling of belonging to the school community.

The school and the governing body are committed to high standards of uniform throughout the school and for children joining our school, we expect that they wear full school uniform each day.

Uniform at Smith's Wood Primary Academy consists of:

Red sweatshirt / cardigan (plain red or with school logo)

White polo shirt

Black / dark grey trousers

Black / dark grey skirt / pinafore dress

Red /white checked dress

Tights may be worn (red, white, black or grey)

Black shoes (trainers will not be permitted)

Please note that trainers should not be worn in the school, except for during PE activities. If a child turns up to school wearing trainers, then the school will issue them with a pair of safe and sturdy plimsolls.

PE kit

Red T shirt, black shorts, black jogging bottoms in the winter

A school badge, for your child's uniform is available from the school office at a cost of £2. It can also be purchased from PBS Sports (B37 6QQ tel.0121 770 8000). Please be aware that the school does not sell uniform directly. PBS has an online shop, where the Smith's Wood uniform can be purchased. The online shop can be found at <https://www.pbsportonline.co.uk/>

It is not necessary to wear uniform with the badge; a plain red jumper or sweatshirt is fine, but we encourage pupils to wear the badge wherever they can.

No jewellery except for watches and stud earrings are permitted to be worn.

All jewellery must be removed by children prior to PE lessons for safety reasons.



CHALLENGE, SUPPORT, PROGRESS

SEND & INCLUSION

Dear Parents and Carers,

Welcome to Smith's Wood Primary Academy!

I wanted to take this opportunity to introduce myself - I am the Special Educational Needs Coordinator in school, and I work alongside Miss. Owen who is the Deputy SENCO.



Mrs. Taylor



Miss. Owen



We have an established inclusion support team at Smith's Wood Primary Academy to look after the social, emotional and mental health needs of our students, as well as the academic needs. We will work with you to ensure that your child can reach their potential here at school through a graduated approach in accordance with the SEND Code of Practice:

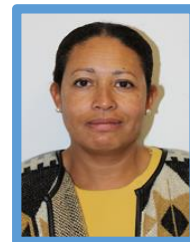
Our inclusion team are here to support you and your child, so please get in contact with one of us if you have any concerns, or if you already know that your child has additional needs. The earlier we know, the earlier we can support you.

Our Inclusion Team:



Child and Family Support Workers

Paula and Laverne can help with any concerns you have or support you may need as a whole family.



Child Therapists



Chris and Carly are trained in Creative Arts and Play Therapy as well as being trained counsellors. They work on a one to one basis with children to help with a wide range of social, emotional and mental health needs.



Behaviour Professional



Mr. Hobbis is there to support children in a positive way to make good behavioural choices.

Speech and Language Therapist

Adrienne works part time in school to help ensure children with Speech and Language needs are identified early and receive appropriate support.



- Please contact me, or one of the Child and Family Support Workers if you know already that you or your child may have additional needs.
- Please sign the consent form for the Speech and Language Therapist, so that if appropriate, she can work with your child.
- Please sign the consent form for your child to be assessed on a one to one basis by the SENCO, if it is appropriate.

Best Wishes,

Mia Taylor (SENCO)



Principal
Miss. D. Givens
B.A.(Hons) Q.T.S



Burtens Way
Smith's Wood
Birmingham
B36 0SZ

Tel: 0121 779 8050



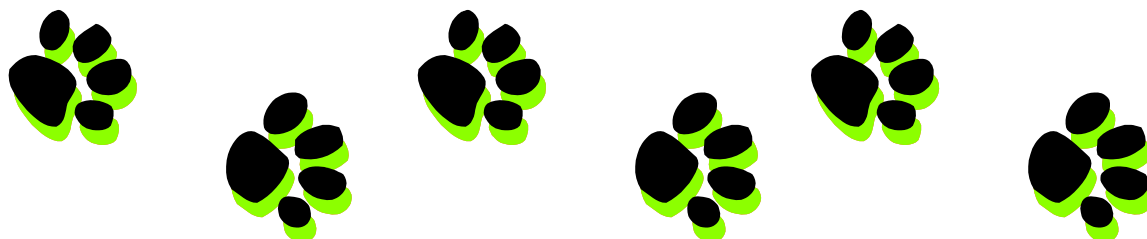
Hello everyone,

My name is Danny. My Birthday is on July 27th and I am nearly 4 years old.

I am a Jackshund (my Daddy was a Jack Russell and my Mommy was a Dachshund) and I'm really friendly. I love making new friends, listening to stories and being around children, and I come into school to visit each week. I'm hoping to get to know some of you, and hopefully you will enjoy spending time with me. I know not everyone will want to play with me, and this is okay. If you don't want to spend time with me, or may be allergic to me, please let the school know.

I look forward to meeting you soon,

Love from Danny x



CHALLENGE, SUPPORT, PROGRESS

Email: office@smithswoodpri.solihull.sch.uk www.smithswoodpri.solihull.sch.uk
Smith's Wood Primary Academy Limited – a private company limited by guarantee and an exempt Charity
Registered in England & Wales – Registration number 09065312
VAT number 189285257

Registered office is situated at Burtens Way, Smith's Wood, Birmingham, B36 0SZ

