

# ACTIVE TOGETHER PARKS

SOLIHULL SCHOOLS ACTIVE PARKS CHALLENGE

Monday 21st June – Friday 16th July 2021



# ACTIVE TOGETHER PARKS

## SOLIHULL SCHOOLS ACTIVE PARKS CHALLENGE

### What is the challenge?

- The **ACTIVE TOGETHER PARKS Challenge** has been developed to encourage schools to support their whole school community to get active beyond the school day, and to support the chief medical officers (CMO) guidance of 60 active minutes a day.
- There are 39 parks/open spaces specific to this challenge, where individuals can get active and earn points along the way.
- Each park/open space has a banner or poster with a QR code. When individuals scan one of the QR codes whilst getting active in one of these locations, schools earn points. More scans = more points!
  - £2,250 worth of PE/sports equipment up for grabs.

Monday 21st June – Friday 16th July 2021



# ACTIVE TOGETHER PARKS

## SOLIHULL SCHOOLS ACTIVE PARKS CHALLENGE

### Why take part?

A great whole-school opportunity to encourage Physical Activity through using the parks and open spaces in Solihull. Let's build on the positive use of parks and open spaces encouraging Physical Activity.

### Challenge Outcomes

- To encourage young people and families to continue to be active using parks and open spaces in and around Solihull as restrictions continue to be lifted.
- To support and encourage understanding of the CMO's active 60 minutes a day: 30 minutes during the school's day with schools supporting the 30 minutes beyond the school day.
- To foster social connections through Physical Activity, supporting whole school communities.

Monday 21st June – Friday 16th July 2021





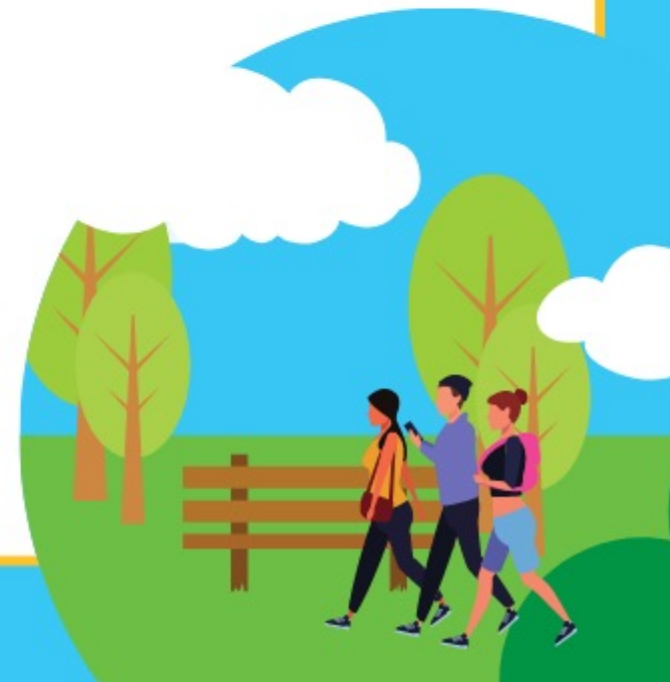
# ACTIVE TOGETHER PARKS

## SOLIHULL SCHOOLS ACTIVE PARKS CHALLENGE

### How your school can take part

- The QR code could be on a banner or on a poster in the local park – walk, run, skip or cycle to hunt it down!
  - ***Scan the QR code.***
  - ***Open the link to complete the entry.***
  - ***Choose your school to support.***
- Encourage family members, friends and colleagues to enter – and support your school!
- Entries are unlimited for duration of the challenge - but you can only enter once a day. Duplicates will be identified via e-mail.
- Anyone entering, must be 18 years or older – this parent, guardian or bubble member will then pledge their points to the relevant school.

Monday 21st June – Friday 16th July 2021



# ACTIVE TOGETHER PARKS

## SOLIHULL SCHOOLS ACTIVE PARKS CHALLENGE

### Flash incentives & themed weeks

- Each scan of the QR code equates to 10 points for the chosen school.
- Every **Thursday** will be **TRIPLE POINTS!**

There will be chances to earn extra points throughout the challenge by taking part in our flash challenges:

- **Flash Challenge Week 1** – Create a video & share the challenge with your whole school community = **200 POINTS**
- **Flash Challenge Week 2** – Share an image of a teacher in the park = **200 POINTS**
- **Flash Challenge Week 3** – Schools share an image of families in the park = **200 POINTS**
- **Flash Challenge Week 4** – Head Teacher share a video or message to thank everyone for taking part = **250 POINTS**

*(This can be a Senior member of staff or Chair of Governors)*

**All Flash Challenges must be completed by tweeting @SSolihullSSP @SolihullNorth**

Monday 21st June – Friday 16th July 2021



# ACTIVE TOGETHER PARKS

## SOLIHULL SCHOOLS ACTIVE PARKS CHALLENGE

### Groups & league table system

- For fairness, we have divided schools into groups, dependant on pupil numbers.
- Schools who finish in 1<sup>st</sup>, 2<sup>nd</sup> & 3<sup>rd</sup> in their group, will win PE/Sports Equipment vouchers for their school!
  - 1<sup>st</sup>: £250 voucher
  - 2<sup>nd</sup>: £150 voucher
  - 3<sup>rd</sup>: £100 voucher
- Leader boards for all groups will be shared on socials and via email regularly throughout the challenge @SolihullNorth @SSolihullSSP. Groups have been named after notable athletes from Solihull.

Godwin

Carney

Johnson

Gardner

Walton

Monday 21st June – Friday 16th July 2021





# ACTIVE TOGETHER PARKS

SOLIHULL SCHOOLS ACTIVE PARKS CHALLENGE

## School leagues

### ACTIVE TOGETHER PARKS

See final slide to  
confirm your  
school's group.

**GODWIN**

Primary/Infant/Junior schools 0-255

**CARNEY**

Primary/Infant/Junior schools 255-450

**JOHNSON**

Primary/Infant/Junior schools 450+

**GARDNER**

Solihull Secondary schools

**WALTON**

Solihull Special schools



KEEP AN EYE OUT  
ON TWITTER FOR  
UP TO DATE  
LEAGUE TABLES

@solihullnorth  
@ssolihullssp

Monday 21st June – Friday 16th July 2021

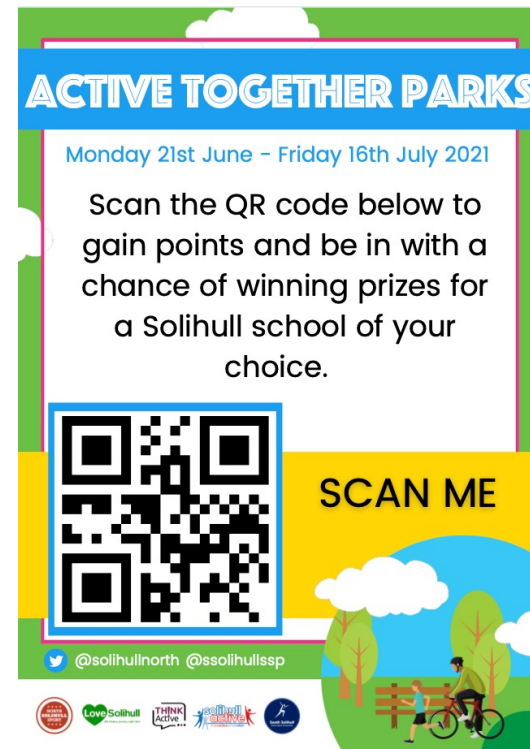


# ACTIVE TOGETHER PARKS

## SOLIHULL SCHOOLS ACTIVE PARKS CHALLENGE

### Which parks are the codes in?

- There are QR codes on a mixture of **ACTIVE TOGETHER PARKS** banners and posters in parks/greenspaces in all areas of Solihull.
- There are 44 sites that have QR codes in place.

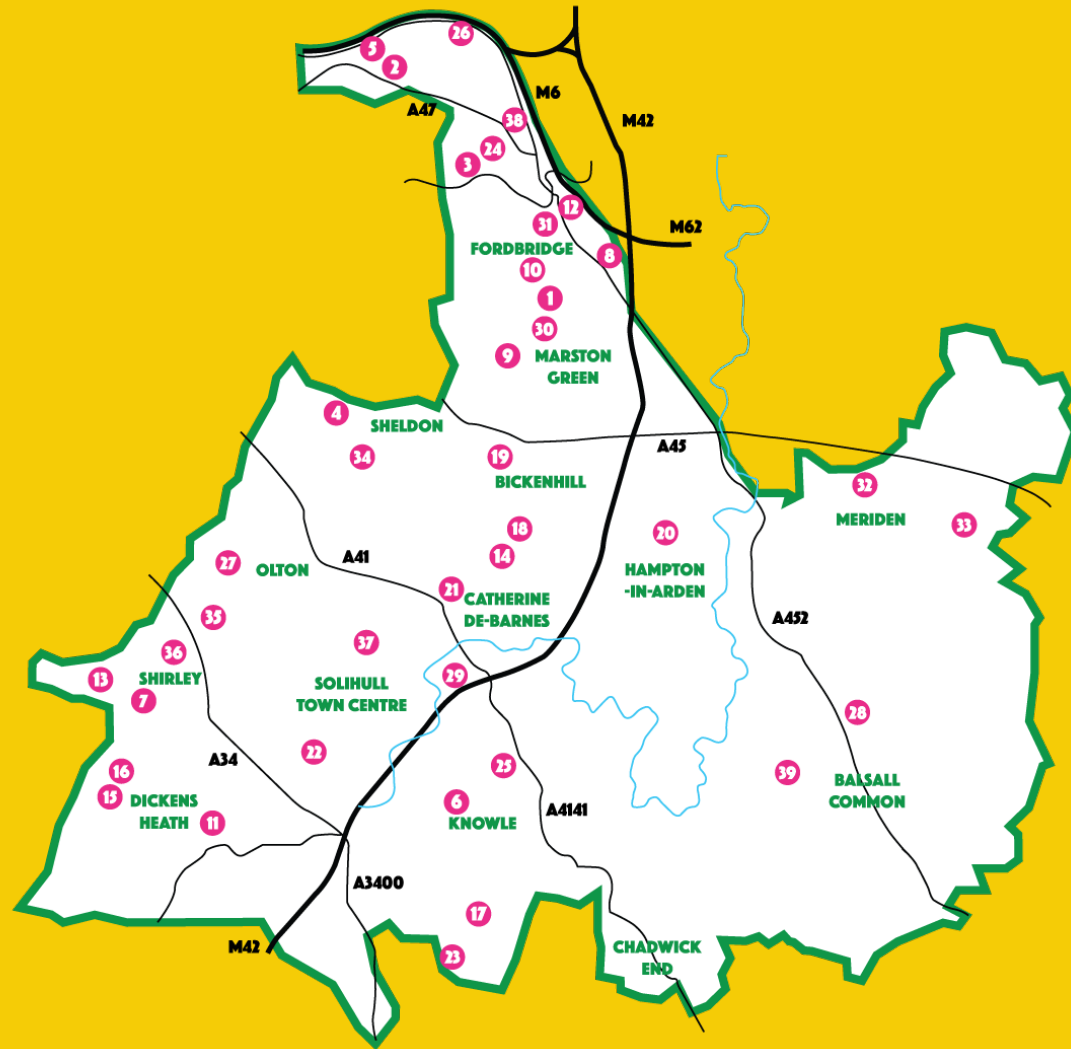


Monday 21st June - Friday 16th July 2021





# ACTIVE TOGETHER - PARK QR CODE LOCATIONS



|    |         |                                    |    |         |                                  |
|----|---------|------------------------------------|----|---------|----------------------------------|
| 1  | B37 5PN | ALCOTT WOOD                        | 21 | B91 2GH | HERMITAGE ROAD RECREATION GROUND |
| 2  | B36 9PB | ARDEN HALL PARK                    | 22 | B91 3LU | HILLFIELD PARK                   |
| 3  | B37 6LU | BABBS MILL PARK                    | 23 | B94 6HH | HOCKLEY HEATH PARK               |
| 4  | B92 7RZ | BARN LANE RECREATION GROUND        | 24 | B37 6BD | KINGSHURST PARK                  |
| 5  | B36 9EF | BEEHCROFT NATURE RESERVE           | 25 | B93 9HT | KNOWLE PARK                      |
| 6  | B93 9BH | BENTLEY HEATH RECREATION GROUND    | 26 | B36 9LP | LANCHESTER PARK                  |
| 7  | B90 2PD | BILLS WOOD                         | 27 | B92 7EU | LANGLEY HALL PARK                |
| 8  | B37 6SR | BLUEBELL RECREATION GROUND         | 28 | CV7 7BN | LAVENDER HALL PARK               |
| 9  | B37 7AJ | BROOKSIDE RECREATION GROUND        | 29 | B91 3HA | MALVERN & BRUETON PARK           |
| 10 | B37 5JJ | CHAPELHOUSE RECREATION GROUND      | 30 | B37 5PA | MARSTON GREEN                    |
| 11 | B90 4JA | CHESWICK GREEN RECREATION GROUND   | 31 | B37 5TB | MERIDEN PARK                     |
| 12 | B37 6RH | COLE BANK PARK                     | 32 | CV7 7RU | MERIDEN SPORTS PARK              |
| 13 | B90 1AP | GREEN LANE                         | 33 | CV5 9AS | MILLISONS WOOD                   |
| 14 | B92 9JS | DAMSON LANE PARK                   | 34 | B92 8OD | OLTON JUBILEE PARK               |
| 15 | B90 1SQ | DICKENS HEATH COUNTRY PARK         | 35 | B90 3LW | PALMERS ROUGH                    |
| 16 | B90 1UB | DICKENS HEATH PLAY AREA & GREEN    | 36 | B90 3AL | SHIRLEY PARK                     |
| 17 | B93 8LJ | DORRIDGE PARK                      | 37 | B91 3DN | TUDOR GRANGE PARK                |
| 18 | B92 0PX | ELMDON COPPICE                     | 38 | B36 0PF | WOODLANDS GREEN PARK             |
| 19 | B92 9EY | ELMDON PARK                        | 39 | CV7 7AF | WILLOW PARK                      |
| 20 | B92 0DQ | HAMPTON-IN-ARDEN RECREATION GROUND |    |         |                                  |

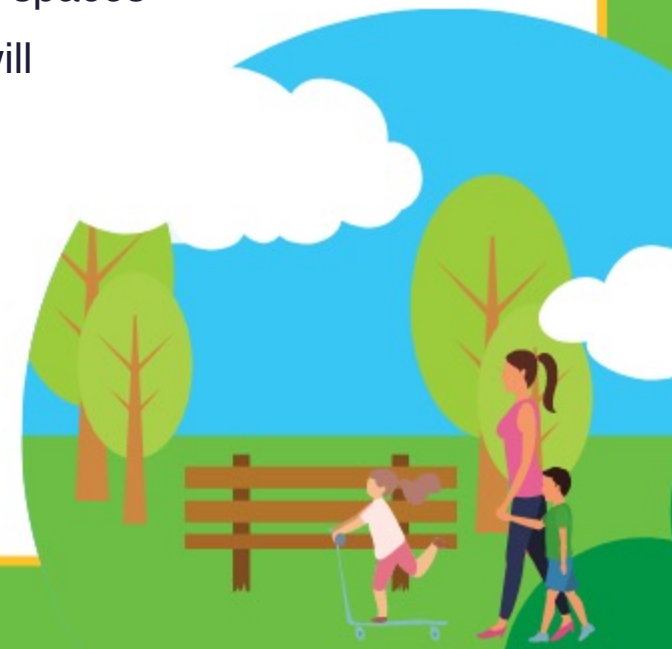
# ACTIVE TOGETHER PARKS

## SOLIHULL SCHOOLS ACTIVE PARKS CHALLENGE

### Steps to Success...

- Engage and share with SLT & governors
- Utilise the resource to help build momentum throughout the 4 weeks with your school community
- Share the virtual assembly with teachers to watch with pupils
- Print and display a class wall chart to track and celebrate pupils using the parks and open spaces
- Share the challenge/Flash challenges with your whole school community, this challenge will be most successful where everyone is encouraged to engage and support your schools points tally
- Share the resources/maps provided
- Share information on your trusted communication channels
- Share images and videos of pupils and staff engaging
- Celebrate pupils and families that are engaging and supporting your school
- Anyone over the age of 18 can scan the QR code and support your school so please

Monday 21st June – Friday 16th July 2021



# ACTIVE TOGETHER PARKS

SOLIHULL SCHOOLS ACTIVE PARKS CHALLENGE

## Follow the journey – get social!

- **Follow us!**
  - Twitter: **@SolihullNorth @SSolihullSSP @SolihullActive @LoveSolihull**
  - Facebook: **Solihull Active**
- Use **#ATParks** and **tag us** in any related posts
- **Share and like** our posts
- **Check our channels daily** for flash challenges, leader board updates
- **Share your photos** in parks with us by commenting on our posts
- Where possible do not post images of the QR code in direct sight or put a sticker over the QR code – this can be scanned without attending the park.

Monday 21st June – Friday 16th July 2021





# GODWIN

## Primary/Infant/Junior schools 0-255

|   |
|---|
| Berkswell C of E VA Primary               |
| Burman Infant                             |
| Cheswick Green Primary                    |
| Coppice Junior                            |
| Cranmore Infant                           |
| Damson Wood Nursery & Infant              |
| George Fentham Endowed School             |
| Haslucks Green Junior                     |
| Hockley Heath Primary                     |
| Kineton Green Primary                     |
| Kingswood School                          |
| Lady Katherine Leveson Primary            |
| Meriden C of E Primary School             |
| Mill Lodge Primary School                 |
| Oak Cottage Primary School                |
| Ruckleigh School                          |
| St Andrew's RC Primary School             |
| St Augustine's RC Primary School          |
| St George And St Teresa RC Primary School |
| St John The Baptist RC Primary School     |
| St Margaret's Academy                     |
| St Mary And St Margaret's Primary School  |
| St. Patrick's C.E. J & I Academy          |
| Streetsbrook Infant & Nursery School      |
| Tudor Grange Academy - St James           |
| Woodlands Infant School                   |



# CARNEY

## Primary/Infant/Junior schools 255-450

|   |
|---|
| Bentley Heath C of E Primary              |
| Blossomfield Infant & Nursery             |
| Dickens Heath Community                   |
| Eversfield School                         |
| Langley Primary School                    |
| Marston Green Infant School               |
| Marston Green Junior School               |
| Our Lady Of Compassion RC Primary School  |
| Our Lady Of The Wayside RC Primary School |
| Peterbrook Primary School                 |
| Sharmans Cross Junior School              |
| Shirley Heath Junior School               |
| Solihull Preparatory School               |
| St Alphege C of E Infant & Nursery School |
| St Alphege C of E Junior School           |
| St Anthony's RC Primary School            |
| Tidbury Green Primary School              |
| Tudor Grange Academy Yew Tree             |
| Widney Junior School                      |



# JOHNSON

## Primary/Infant/Junior schools 450+

|                              |
|------------------------------|
| Balsall Common Primary       |
| Bishop Wilson C of E Primary |
| Castle Bromwich Infant       |
| Castle Bromwich Junior       |
| Coleshill Heath Primary      |
| Dorridge Primary             |
| Fordbridge Primary           |
| Greswold Primary School      |
| Kingshurst Primary           |
| Knowle C of E Primary        |
| Monkspath J & I School       |
| Olton Primary                |
| Smith's Wood Primary         |
| St Anne's RC Primary School  |
| Ulverley Primary School      |
| Valley Primary School        |
| Windy Arbor Primary          |
| Yorkswold Primary School     |



# GARDNER

## Secondary Schools

|                                    |
|------------------------------------|
| Alderbrook School                  |
| Arden Academy                      |
| Coleshill School                   |
| Heart Of England School            |
| John Henry Newman Catholic College |
| Langley School                     |
| Light Hall School                  |
| Lode Heath School                  |
| Lyndon School                      |
| Park Hall Academy                  |
| Smith's Wood Academy               |
| Solihull School                    |
| St Peter's RC School               |
| Tudor Grange Academy               |
| Grace Academy Solihull             |
| Tudor Grange Kingshurst            |
| WMG Academy Solihull               |



# WALTON

## Special Schools

|                       |
|-----------------------|
| Forest Oak School     |
| Hazel Oak School      |
| Merstone School       |
| Northern House        |
| Reynolds Cross School |
| Triple Crown          |
| Castlewood Academy    |
| Summerfield           |
| Solihull Academy      |

